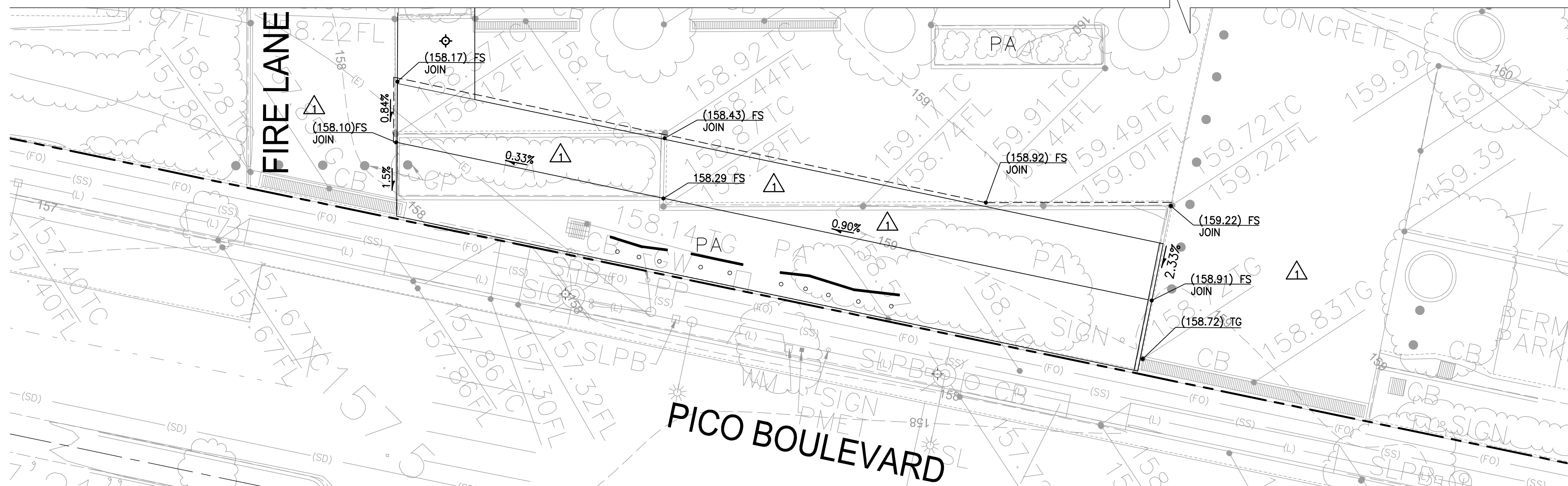


C0.10



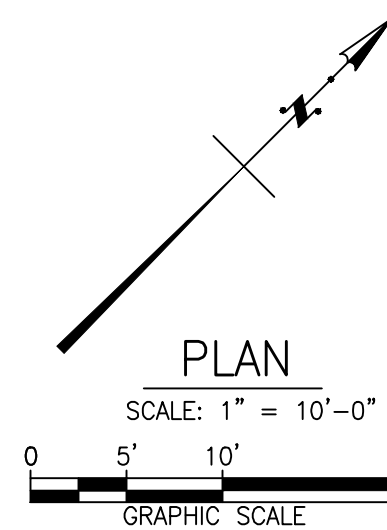
STORM DRAIN

- TREE PROTECTION ZONE (TPZ) NOTES:

- SEE LANDSCAPE DRAWINGS FOR TREE PROTECTION PLAN.

NOTE:

1. EXCAVATION SHALL BE MADE IN COMPLIANCE WITH CAL/OSHA REGULATIONS



PROJECT

KoningEizenbergArchitecture
1454 25th St, Santa Monica, CA 90404
310.828.6131 info@kearch.com
310.828.0719 fax www.kearch.com

ARCHITECT'S PROJECT NO. _____

1001

ARCHITECT

All designs, ideas, arrangements and plans indicated by these drawings are the property and copyright of the Architect and shall neither be used on any other work nor be disclosed to any other person for any use whatsoever without written permission.

Koning Eizenberg Architecture and/or its principals and employees waives any and all liability or responsibility for problems that may occur when these plans, drawings, specifications, and/or designs are followed without the professional's guidance with ambiguities, or conflicts which are alleged.



k p f f Consulting Engineers
6080 Center Dr. Suite 700
Los Angeles, California 90045
(310) 665-2800 Fax (310) 665-9075

CONSULTANT



1437 4TH STREET, SUITE 300
SANTA MONICA, CA 90401
TEL. (310) 458-2205
FAX. (310) 399-1541
architecture@smgov.net

DATE : 20

DATE : _____ 20__

APPROVED BY :
Miriam Mulder,
Architecture Services Manager

CITY OF SANTA MONICA
DEPARTMENT OF PUBLIC WORKS

REVIEWED BY: DATE: _____ 20 ____

REVIEWED BY: DATE: _____ 20__

REVIEWED BY: DATE: _____ 20__

CITY CLIENT

[illegible]

ISSUE

PLAN CHECK CORRECTIONS

DATE
05/07/2012

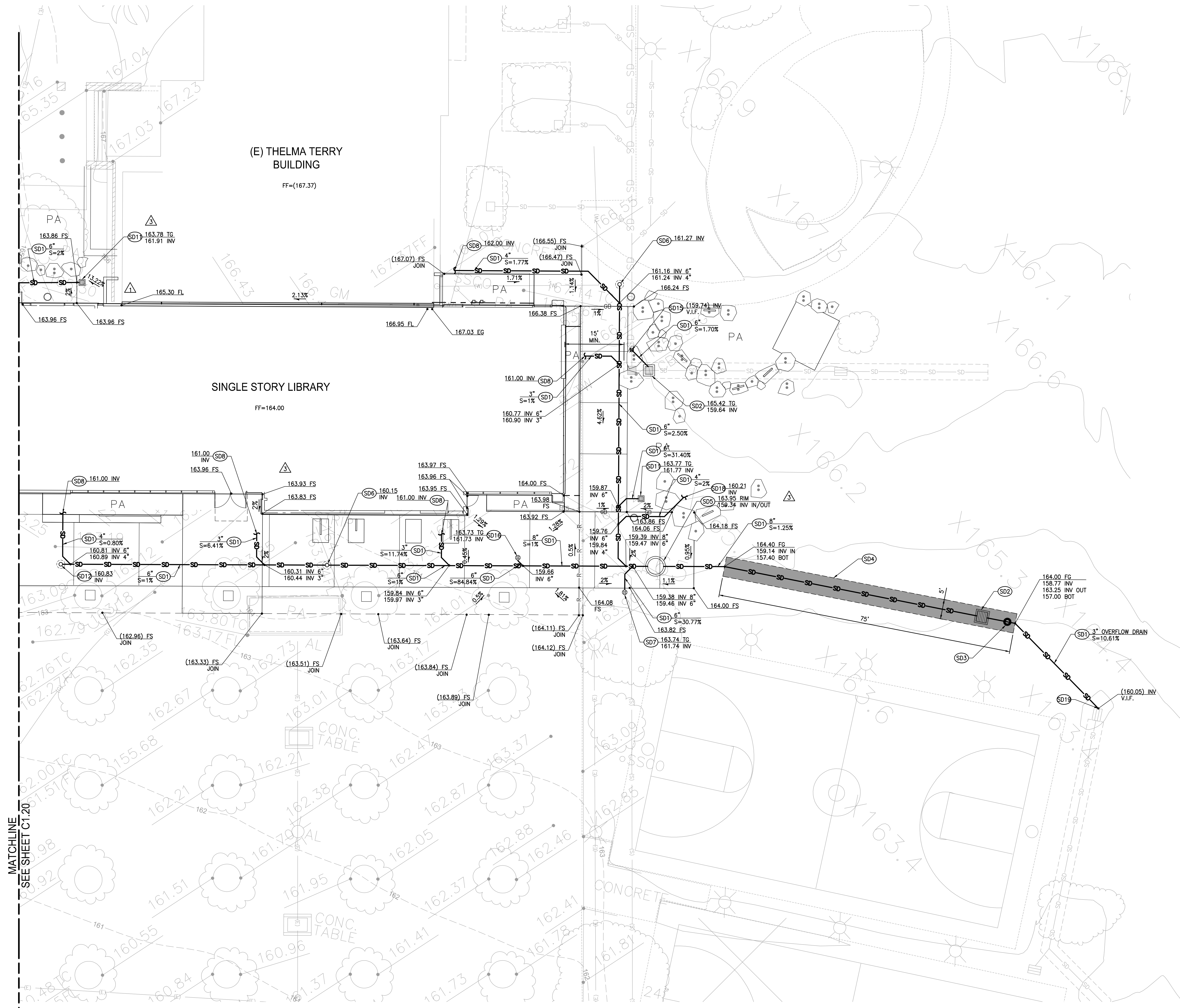
DRAWING NO. **6693**

SHEET TITLE

Grading and Drainage
Plan

SHEET NO.

C1.20



UTILITY CONSTRUCTION NOTES:

STORM DRAIN

- (SD1) PVC, SDR-35 STORM DRAIN PIPE PER DETAIL 8, ON SHEET C5.00. SIZE AND SLOPE PER PLAN.
- (SD2) 24"x24" PRECAST CONCRETE CATCH BASIN PER BROOKS PRODUCTS 2424 CB WITH PARKWAY RATED CAST IRON GRATE OR APPROVED EQUAL. SEE DETAIL 2, ON SHEET C5.01.
- (SD3) CONSTRUCT TEST STATION MARKER PER DETAIL 5, ON SHEET C5.00. REFER TO INFILTRATION TRENCH DETAIL 7, ON SHEET C5.00 FOR APPLICATION.
- (SD4) CONSTRUCT INFILTRATION TRENCH PER DETAIL 7, ON SHEET C5.00. LONGITUDINAL PIPE IS 6" DIAMETER PERFORATED PIPE. WHILE EXCAVATING TRENCH ALL TREE ROOTS ENCOUNTERED SHALL BE HAND SAWN.
- (SD5) CDS 2015-4 PRECAST CONCRETE WATER QUALITY SYSTEM PER DETAIL 1, ON SHEET C5.02.
- (SD6) STANDARD CLEANOUT PER DETAIL 6, ON SHEET C5.00.
- (SD7) PLANTER DRAIN PER DETAIL 1, ON SHEET C5.01.
- (SD8) POINT OF CONNECTION 5 FEET FROM BUILDING FACE. SEE PLUMBING DRAWINGS FOR CONTINUATION.
- (SD9) CONNECTION TO EXISTING PLANTER DRAIN. CONTRACTOR TO COORDINATE LOCATION AND INVERT ELEVATIONS PRIOR TO CONSTRUCTION.
- (SD10) NOT USED.
- (SD11) 12"x12" PRECAST CONCRETE CATCH BASIN PER BROOKS PRODUCTS 1212 CB WITH PARKWAY RATED CAST IRON GRATE OR APPROVED EQUAL. SEE DETAIL 5, ON SHEET C5.01.
- (SD12) SHALLOW DEPTH CLEANOUT PER DETAIL 6, ON SHEET C5.01.
- (SD13) MODIFIED MAXWELL PLUS DRAINAGE SYSTEM PER DETAIL 8, ON SHEET C5.01.
- (SD14) AREA DRAIN PER JAY R. SMITH 2005 Y-PIPE SIZE ABPB OR APPROVED EQUIVALENT. LATERALS FROM AREA DRAIN SHALL BE 6" PVC UNLESS NOTED OTHERWISE.
- (SD15) CONNECT TO EXISTING 6" PVC STORM DRAIN PIPE. CONTRACTOR TO COORDINATE LOCATION AND INVERT ELEVATIONS PRIOR TO CONSTRUCTION.
- (SD16) AREA DRAIN PER JAY R. SMITH 2005 Y-PIPE SIZE ABPB OR APPROVED EQUIVALENT. LATERALS FROM AREA DRAIN CONNECTING TO MAIN SHALL BE 6" PVC UNLESS NOTED OTHERWISE.
- (SD17) NOT USED.
- (SD18) POINT OF CONNECTION. SEE LANDSCAPE DRAWINGS FOR CONTINUATION.
- (SD19) BREAK INTO EXISTING CATCH BASIN AND CONNECT NEW OVERFLOW PIPE. CONTRACTOR TO COORDINATE LOCATION AND INVERT ELEVATIONS PRIOR TO CONSTRUCTION.
- (SD20) INSTALL 12" MONITORING WELL.

TREE PROTECTION ZONE (TPZ) NOTES:

- COORDINATE ALL OFF-SITE IMPROVEMENTS WITHIN THE TPZ WITH THE COMMUNITY FORESTERS OFFICE.
 - NO CONSTRUCTION MATERIALS OR ACTIVITIES ALLOWED IN THIS AREA.
 - PRUNING OF CITY TREES TO PROVIDE CLEARANCE FOR CONSTRUCTION ACTIVITIES SHALL ONLY BE DONE BY CITY OF SANTA MONICA COMMUNITY FOREST OPERATIONS.
 - FENCE THE TPZ AS SHOWN WITH A 6" CHAIN LINK FENCE TO PREVENT WOUNDS TO THE TREE AND SOIL COMPACTION WITHIN THE ROOT ZONE. POST THE FENCE WITH A SIGN STATING "TREE PROTECTION ZONE - KEEP OUT".
- REFER TO TREE PROTECTION ZONE GUIDELINES ON SHEET C0.10 FOR FURTHER INFORMATION.
- SEE LANDSCAPE DRAWINGS FOR TREE PROTECTION PLAN.

NOTE:

- EXCAVATION SHALL BE MADE IN COMPLIANCE WITH CAL/OSHA REGULATIONS.

All designs, ideas, arrangements and plans indicated by these drawings are the property and copyright of the Architect and shall neither be used on any other work nor be disclosed to any other person for any use whatsoever without written permission.

Koning Eisenberg Architecture and/or its principals and employees waives any and all liability or responsibility for problems that may occur when these plans, drawings, specifications, and/or designs are followed without the professional's guidance with ambiguities, or conflicts which are alleged.



KPI Consulting Engineers
6880 Center Dr. Suite 700
Los Angeles, California 90045
(310) 965-2800 Fax (310) 965-9075

CONSULTANT

City of Santa Monica
Architecture Services

1437 4TH STREET, SUITE 300
SANTA MONICA, CA 90401
TEL: (310) 459-2205
FAX: (310) 398-1541
architecture@smgov.net

SUBMITTED BY: DATE: 05/07/12

APPROVED BY: DATE: 05/07/12

Miriam Muller, Architecture Services Manager

CITY OF SANTA MONICA

DEPARTMENT OF PUBLIC WORKS

REVIEWED BY: DATE: 05/07/12

REVIEWED BY: DATE: 05/07/12

REVIEWED BY: DATE: 05/07/12

CITY CLIENT

NO.	DATE	BY	DESCRIPTION
1	05/07/12		PLAN CHECK 1
2	03/06/12		ADDENDUM 3
3	02/21/12		ADDENDUM 2
REVISIONS			

ISSUE

PLAN CHECK CORRECTIONS

DATE: 05/07/2012

DRAWING NO. 6693

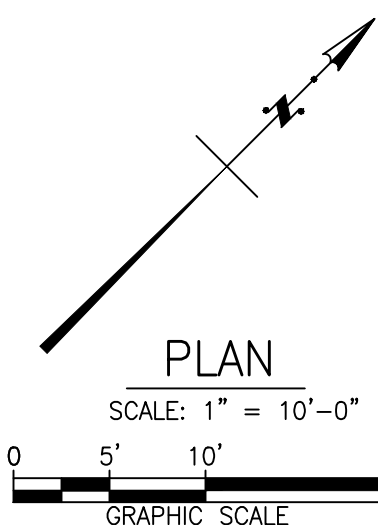
SHEET TITLE

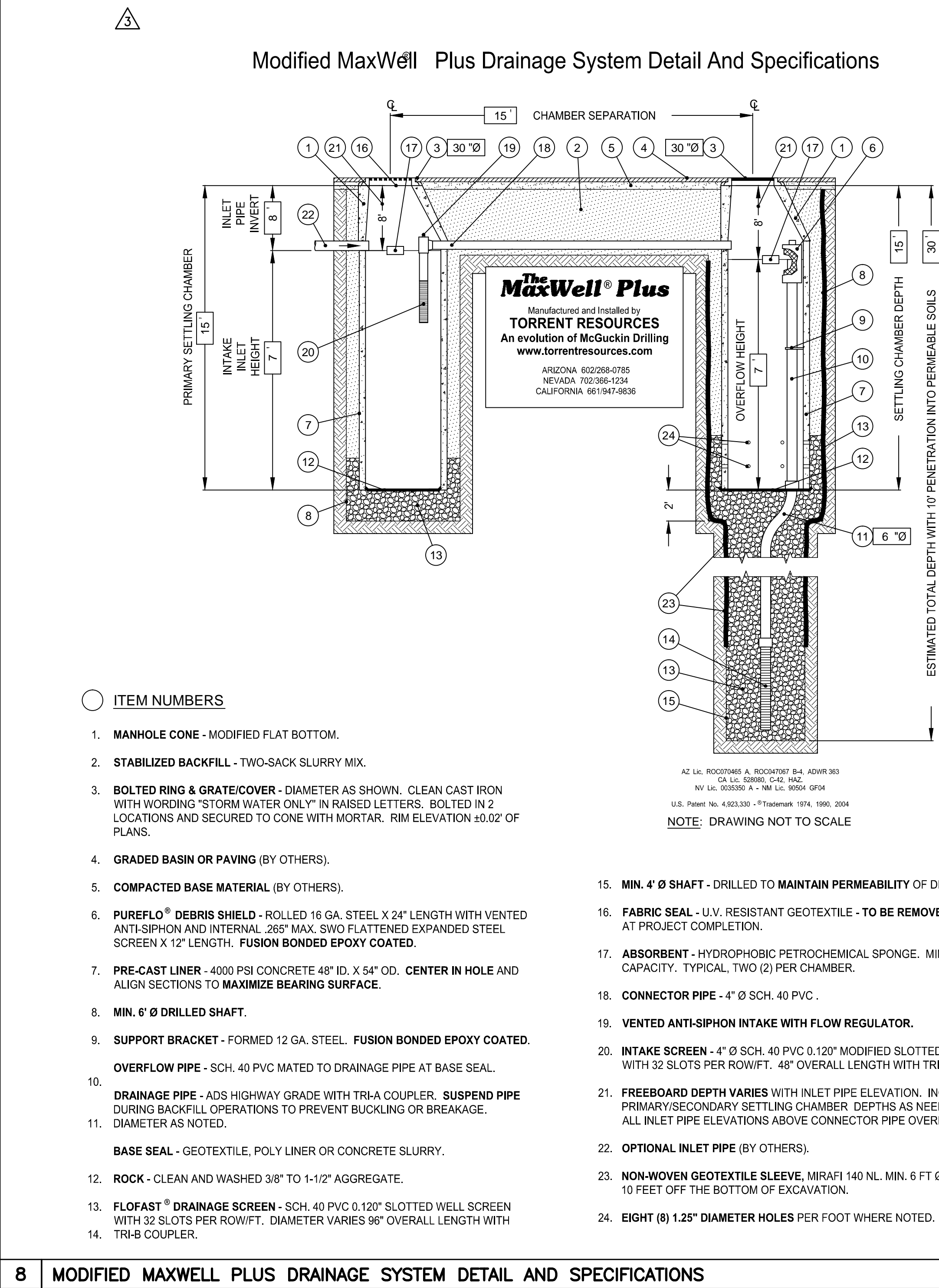
Grading and Drainage

Plan

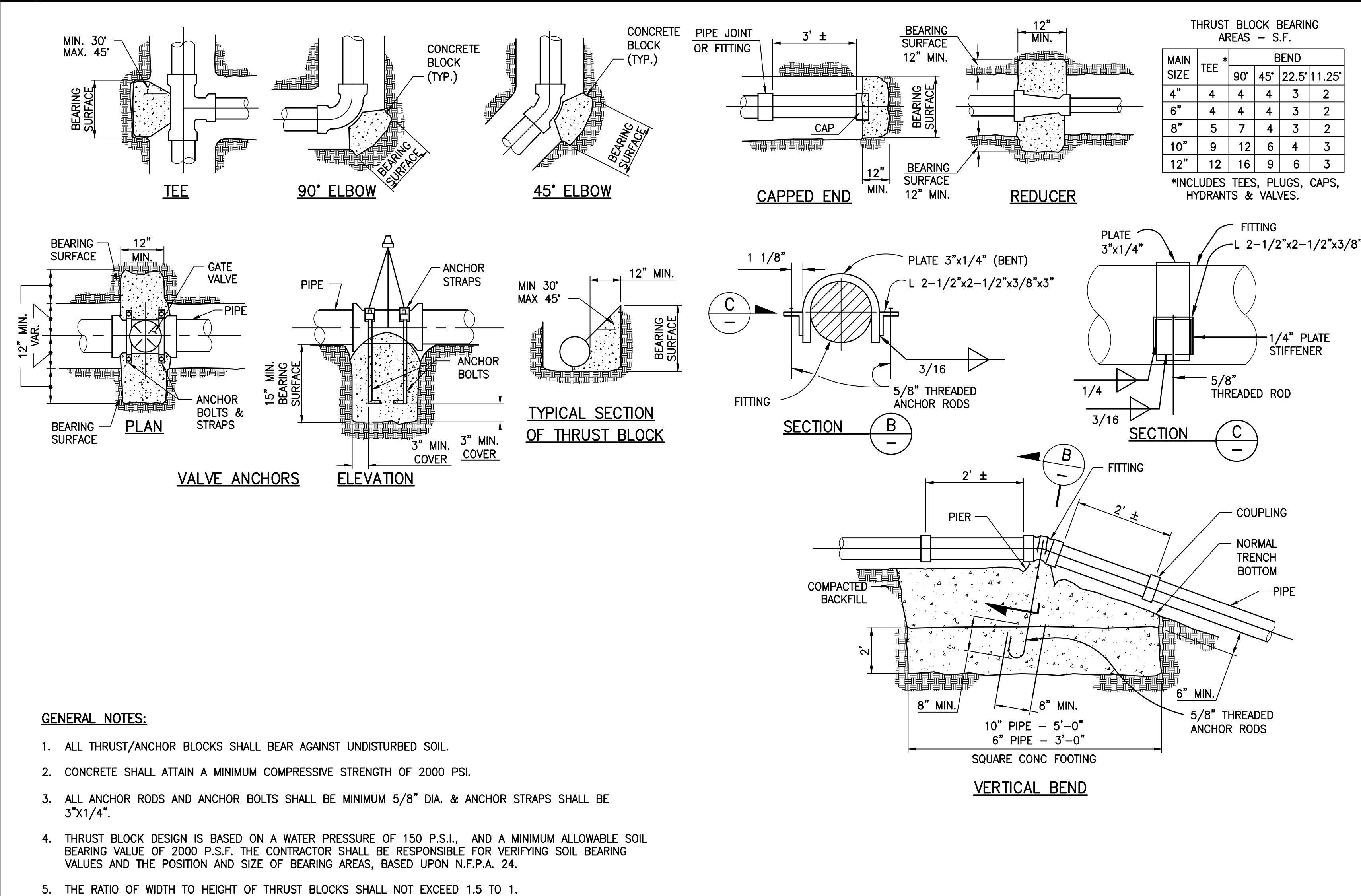
SHEET NO.

C1.21

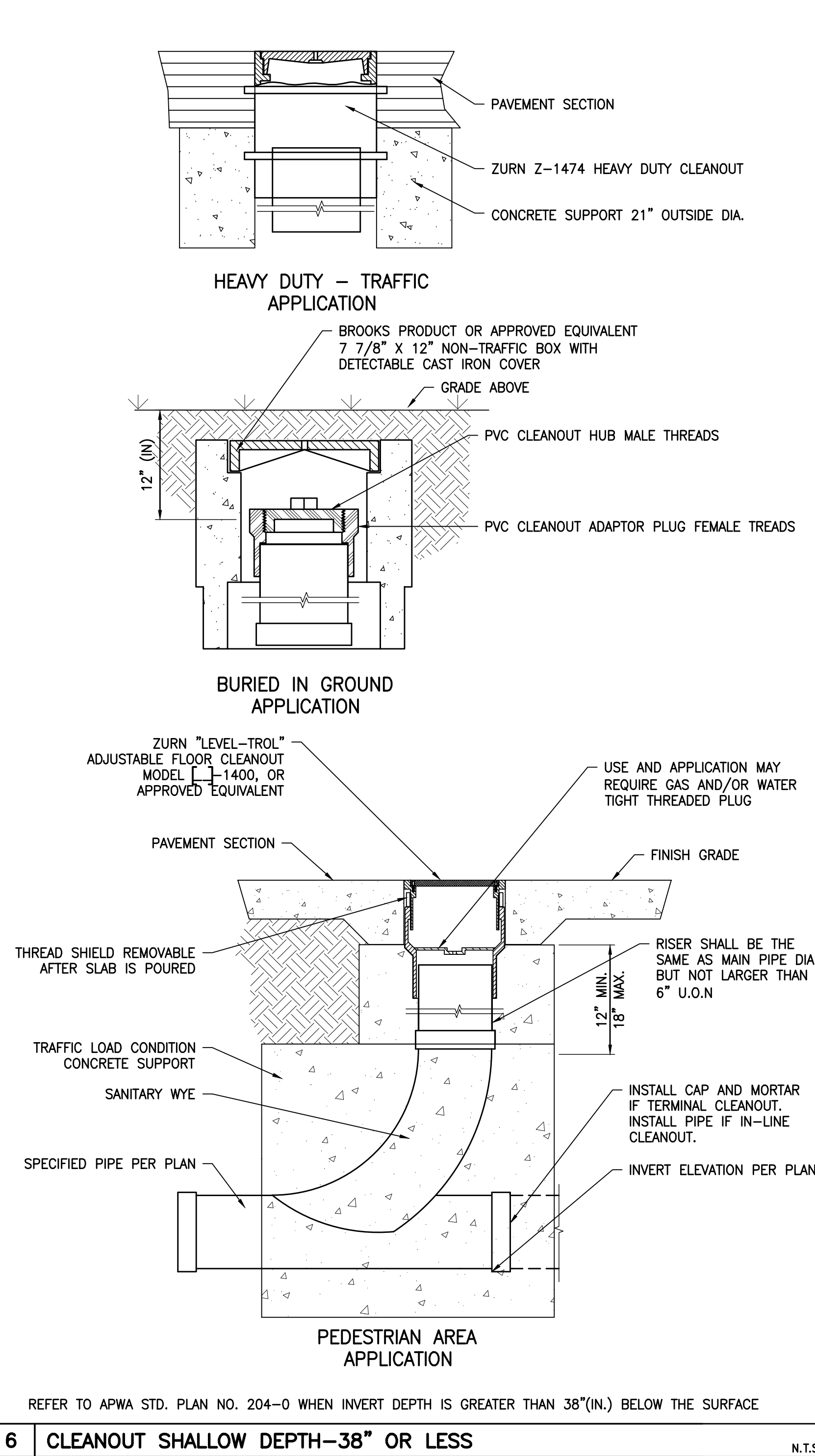




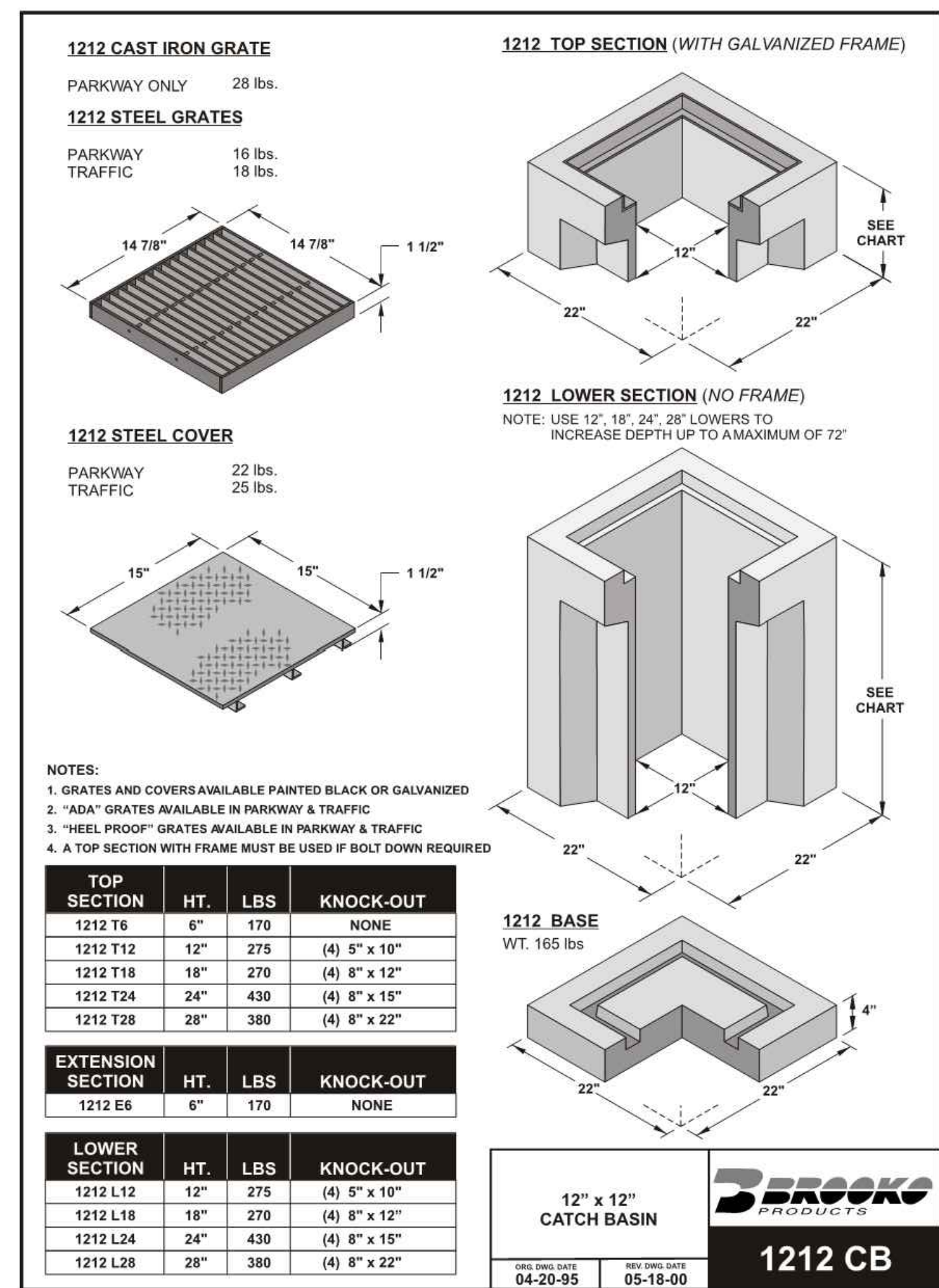
8 MODIFIED MAXWELL PLUS DRAINAGE SYSTEM DETAIL AND SPECIFICATIONS



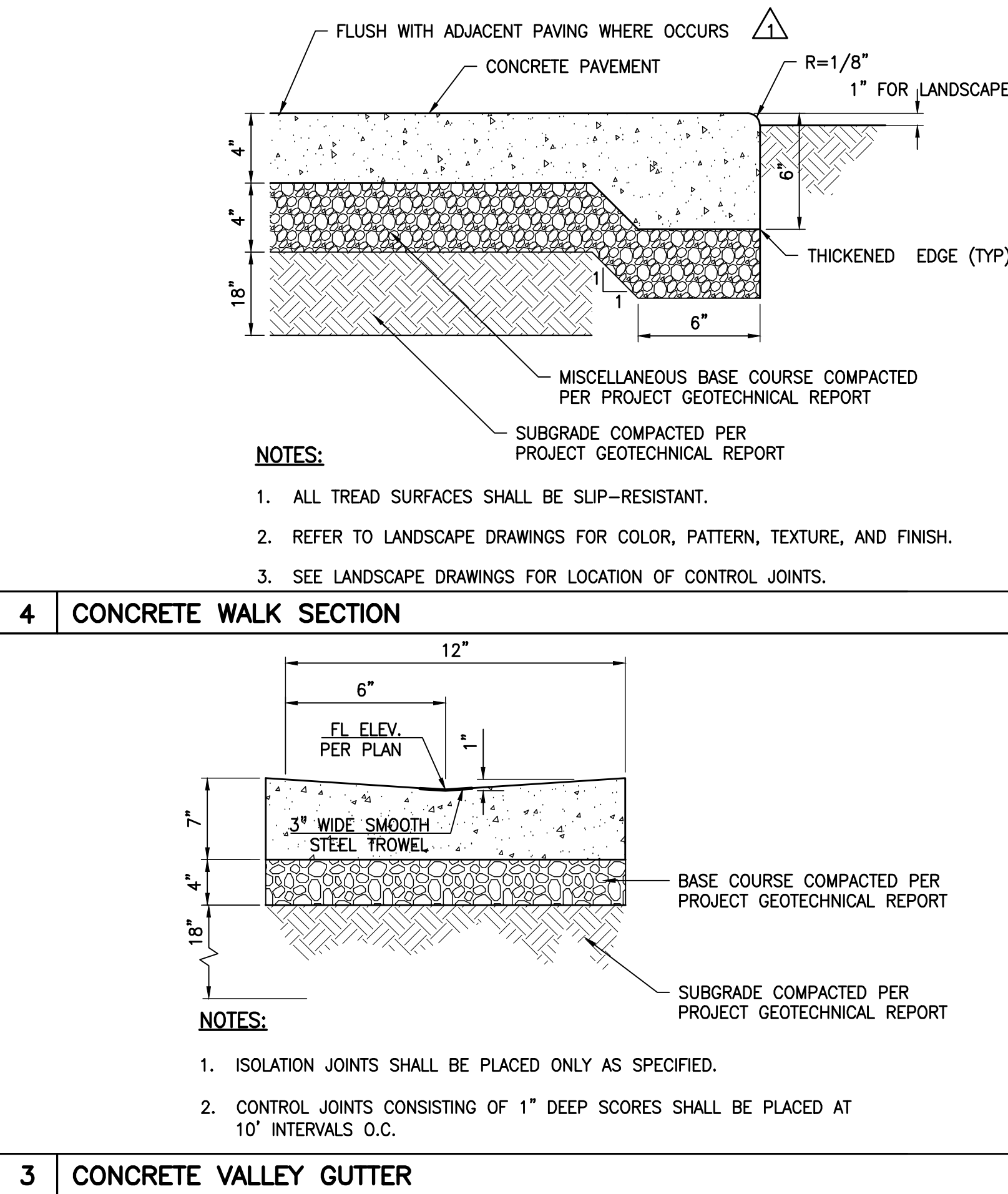
7 THRUST AND ANCHOR BLOCK DETAILS



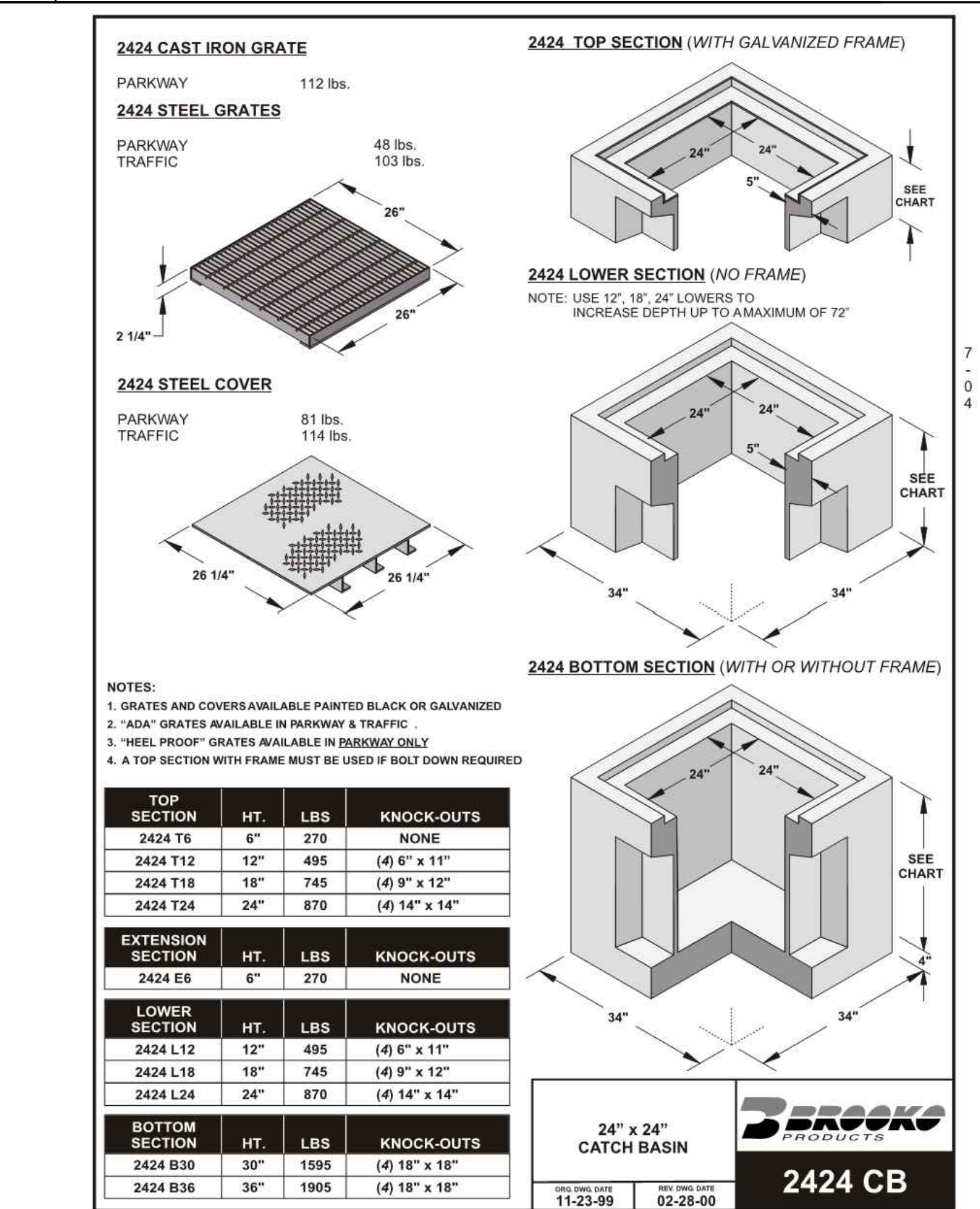
6 CLEANOUT SHALLOW DEPTH-38" OR LESS



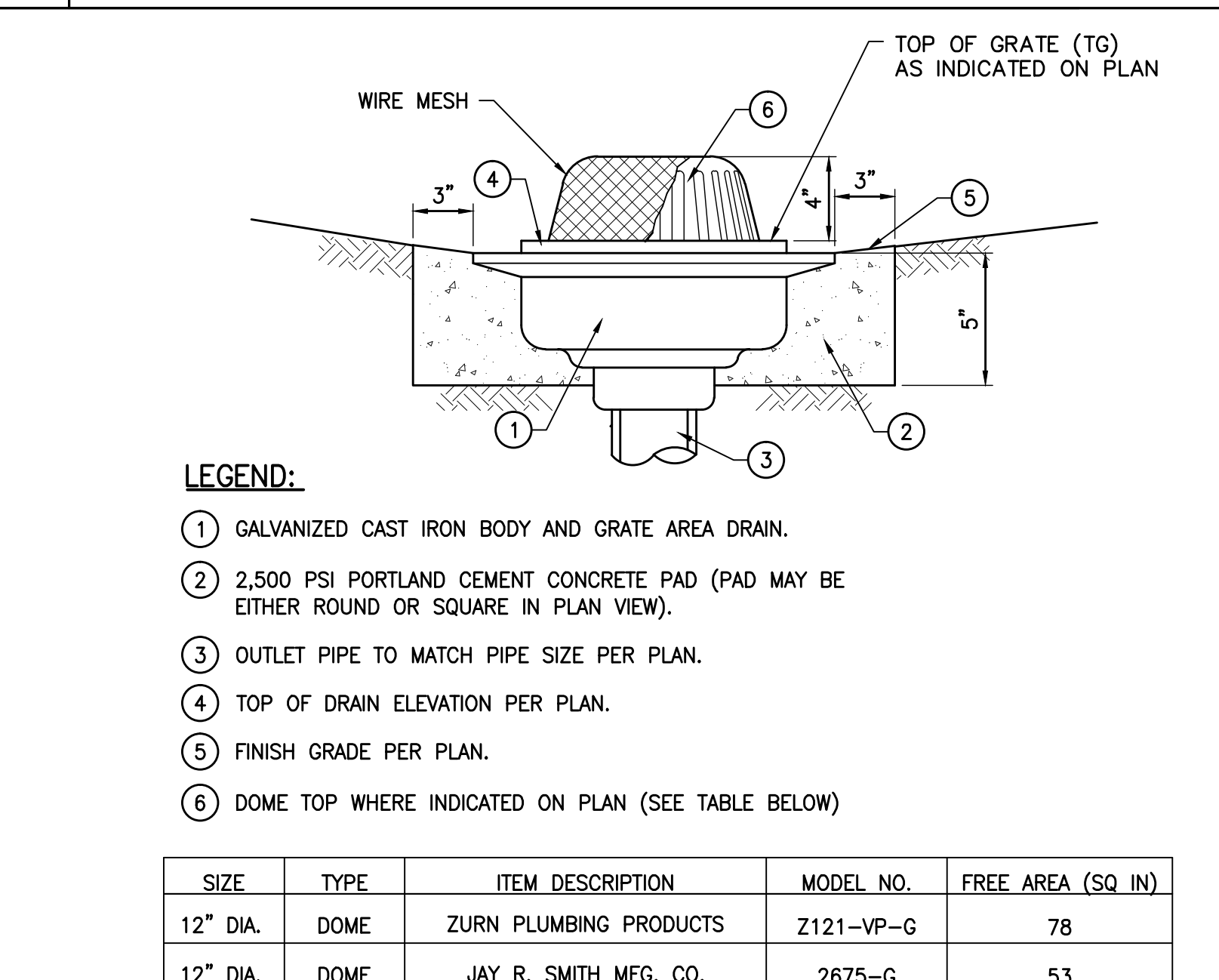
5 12" X 12" CATCH BASIN



3 CONCRETE VALLEY GUTTER



2 24" X 24" CATCH BASIN



1 PLANTER DRAIN DETAIL



CONTECH
STORMWATER
SOLUTIONS_{LLC}
contechstormwater.com

CDS2015-4
PRECAST CONCRETE WATER QUALITY SYSTEM
STANDARD DETAIL

GENERAL NOTES

1. CONTECH TO PROVIDE ALL MATERIALS UNLESS NOTED OTHERWISE.
2. DIMENSIONS MARKED WITH () ARE REFERENCE DIMENSIONS. ACTUAL DIMENSIONS MAY VARY.
3. FOR FURTHER INFORMATION DRAWINGS WITH DETAILED STRUCTURE DIMENSIONS AND WEIGHTS, PLEASE CONTACT YOUR CONTECH STORMWATER SOLUTIONS REPRESENTATIVE. www.contechstormwater.com
4. CDS WATER QUALITY STRUCTURE SHALL BE IN ACCORDANCE WITH ALL DESIGN DATA AND INFORMATION CONTAINED IN THIS DRAWING.
5. STRUCTURE AND CASTINGS SHALL MEET ASHOTO H520 LOAD RATING.
6. PVC HYDRAULIC SHEAR PLATE IS PLACED ON SHELF AT BOTTOM OF SCREEN CYLINDER. REMOVE AND REPLACE AS NECESSARY DURING MAINTENANCE CLEANING.

INSTALLATION NOTES

1. ANY SUB-BASE, BACKFILL DEPTH, AND/OR ANTI-FLOUTAGE PROVISIONS ARE SITE-SPECIFIC DESIGN DECISIONS AND SHALL BE SPECIFIED BY ENGINEER OF RECORD.
2. CONTRACTOR TO PROVIDE EQUIPMENT WITH SUFFICIENT LIFTING AND REACH CAPACITY TO LIFT AND SET THE CDS MANHOLE STRUCTURE (LIFTING CLUTCHES PROVIDED).
3. CONTRACTOR TO ADD JOINT SEALANT BETWEEN ALL STRUCTURE SECTIONS, AND ASSEMBLE STRUCTURE.
4. CONTRACTOR TO PROVIDE, INSTALL, AND GROUT PITS. MATCH PIPE INVERTS WITH ELEVATIONS SHOWN.
5. CONTRACTOR TO TAKE APPROPRIATE MEASURES TO ASSURE UNIT IS WATER TIGHT, HOLDING WATER TO FLOWLINE INVERT MINIMUM. IT IS SUGGESTED THAT ALL JOINTS BELOW PIPE INVERTS ARE GROUTED.

3	05/07/12		PLAN CHECK 1
2	03/06/12		ADDENDUM 3
1	02/21/12		ADDENDUM 2
NO.	DATE	BY	DESCRIPTION

REVISIONS

ISSUE

PLAN CHECK CORRECTIONS

DATE
05/07/2012

DRAWING NO. **6693**

SHEET TITLE
Details

SHEET NO.

C5.02

PROJECT

KoningEizenbergArchitecture
1454 25th St, Santa Monica, CA 90404
310.828.6131 info@kearch.com
310.828.0719 fax www.kearch.com

ARCHITECT'S PROJECT NO. _____

1001

ARCHITECT

All designs, ideas, arrangements and plans indicated by these drawings are the property and copyright of the Architect and shall neither be used on any other work nor be disclosed to any other person for any use whatsoever without written permission.

Koning Eizenberg Architecture and/or its principals and employees waives any and all liability or responsibility for problems that may occur when these plans, drawings, specifications, and/or designs are followed without the professional's guidance with ambiguities, or conflicts which are alleged.



k p f f Consulting Engineers
6080 Center Dr. Suite 700
Los Angeles, California 90045
(310) 665-2800 Fax (310) 665-9075

CONSULTANT



1437 4TH STREET, SUITE 300
SANTA MONICA, CA 90401
TEL. (310) 458-2205
FAX. (310) 399-1541
architecture@smgov.net

DATE : _____ 20____

SUBMITTED BY : _____

DATE : _____ 20____

APPROVED BY :
Miriam Mulder,
Architecture Services Manager

CITY OF SANTA MONICA
DEPARTMENT OF PUBLIC WORKS

REVIEWED BY : DATE : _____ 20 ____

REVIEWED BY : DATE : 20

REVIEWED BY : DATE : 20

CITY CLIENT

3	05/07/12		PLAN CHECK 1
2	03/06/12		ADDENDUM 3
1	02/21/12		ADDENDUM 2
NO.	DATE	BY	DESCRIPTION

REVISIONS

ISSUE

PLAN CHECK CORRECTIONS

DATE
05/07/2012

DRAWING NO. **6693**

SHEET TITLE
Details

SHEET NO.

C5.02